

## User Guide

Date: November 2006

Document No.: 95-124692

Page 1/5

### Thrane & Thrane Iridium SMS Client User Guide

#### 1. Thrane & Thrane Iridium SMS Client

This document describes how to use the Thrane & Thrane SMS Client on a pc connected to an Iridium telephone.

##### 1.1 Inbox

When starting up, the program will open in the Inbox of the SMS Client (refer to fig. 1) like any other email application. If/when any new message or SMS arrives these will appear in this Inbox in bold letters (refer to fig. 2) as long as the email/SMS message remains unread.

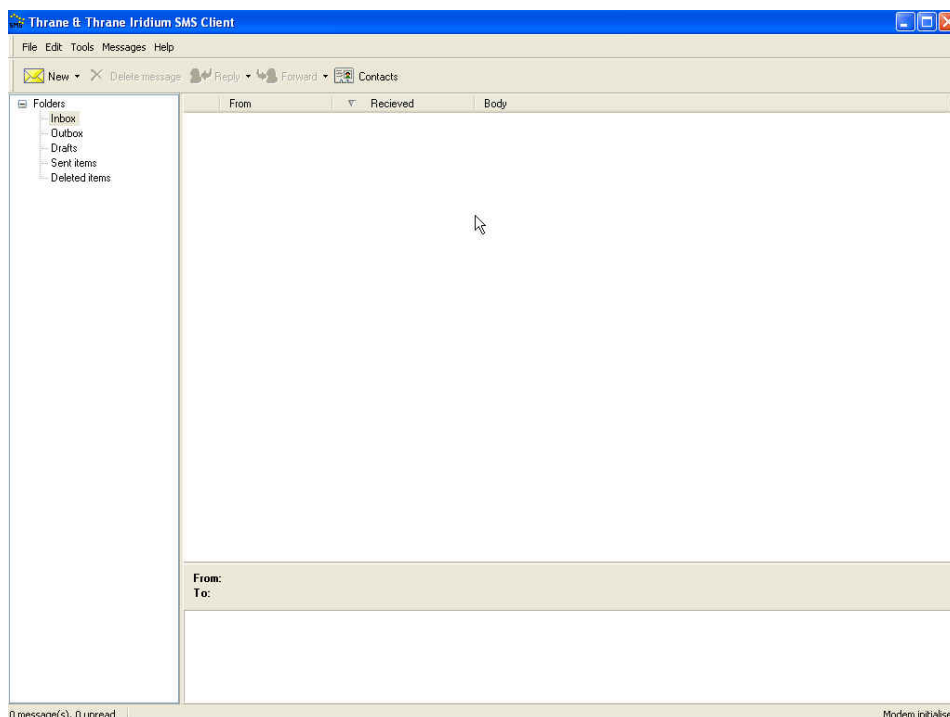


Fig. 1

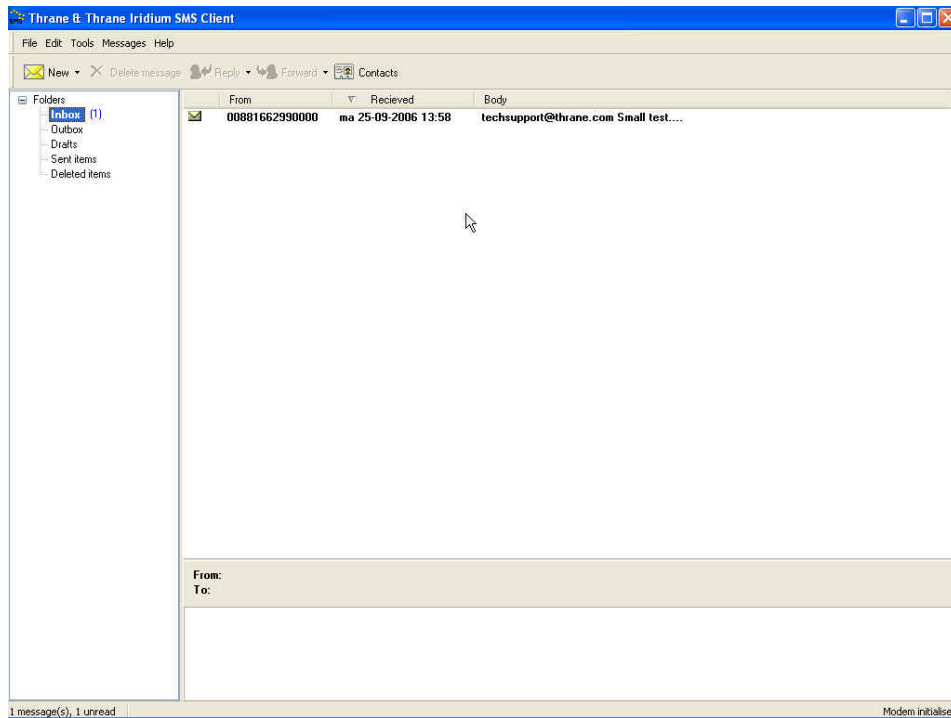


Fig. 2

By double clicking on the unread message string the message text will be presented (refer to fig. 3).

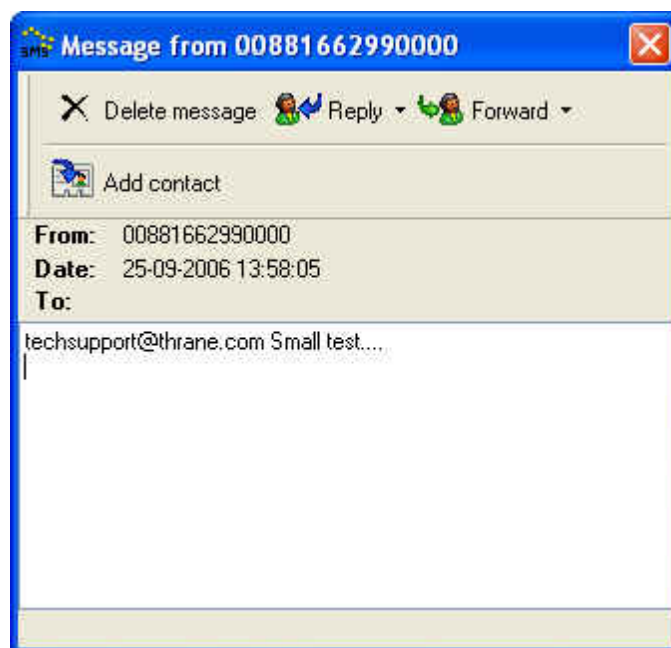


Figure 3

## 1.2 Composing message

Messages may be send from the client either as emails or as SMSs. However, do note that SMS messages thus initiated from an Iridium phone may only be received by US registered mobile telephones.

When pressing the arrow field next to the “New” icon in top left corner a drop down menu appears from which it is possible to choose either New Email or New SMS. Having selected either of the two options the text editor will start (refer to fig. 4 & 5). Please note the limitation in number of characters available for composing the message as indicated in lower right corner of the editor window.

When having finalized typing the message press the “Send” icon and the message will be transferred to the Outbox, waiting to be send. The system comprises an automatic “Send/Receive” routine.

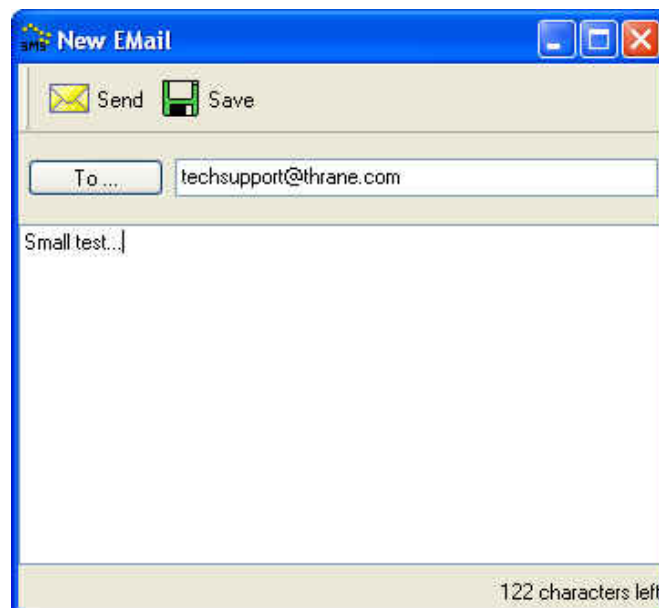


Figure 4

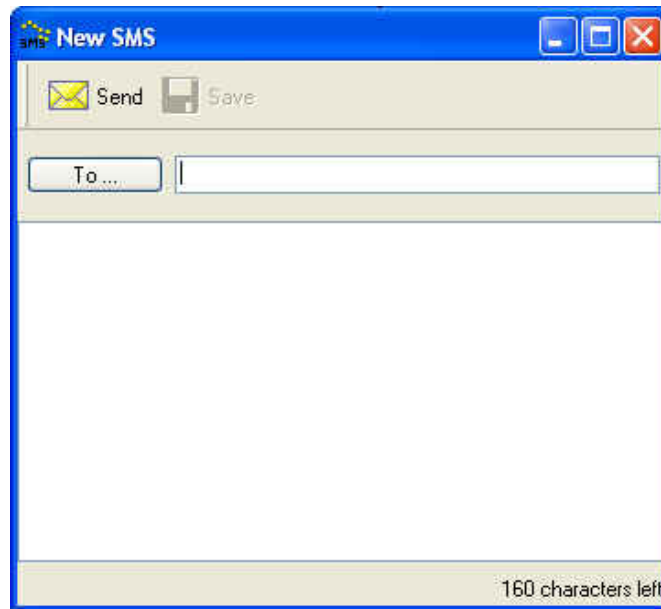


Figure 5

Like in an ordinary email program it is also possible to either reply to or forward a message in the SMS Client simply by choosing either the “Reply” icon or the “Forward” icon.

### 1.3 Contacts

In the Contacts option it is possible to enter and store both email addresses and mobile numbers, i.e. this is the address book. Activate the “Contacts” icon which will open the Contacts pop up window and fill in the relevant data (refer to fig. 6). Having entered the relevant data press <Save contact> to store the entry.

When in the New SMS or New EMail window clicking the <To> field will call up the address book for selection of one or more of the contact entries. If none the entries in the address book are to be used simply click <exit> and enter the addressee details manually.

**Note:** If composing an email (New EMail window) only the email addresses of the address book will appear and likewise when composing a SMS in the New SMS window only the phone numbers of the address book entries will appear.

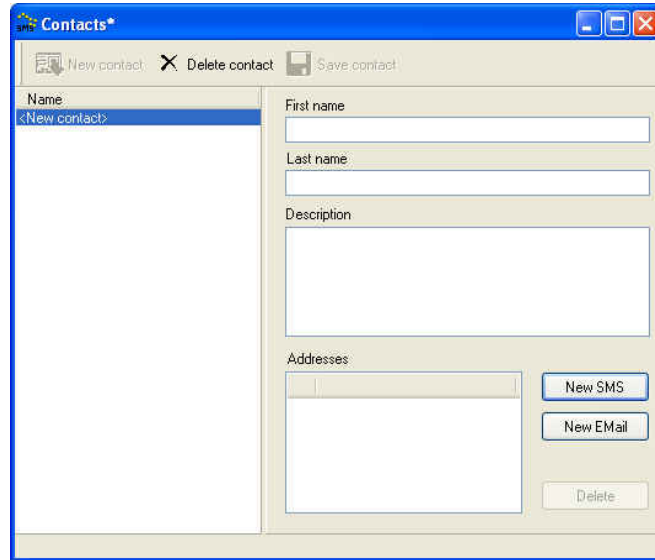


Figure 6

## 1.4 Configuration

By entering the configuration menu from the Tools drop down menu it is possible to select language as either Danish or English, selecting Communication port 1 or 2 for the SMS Client and set the required notification on receipt of new messages (refer to fig. 7).

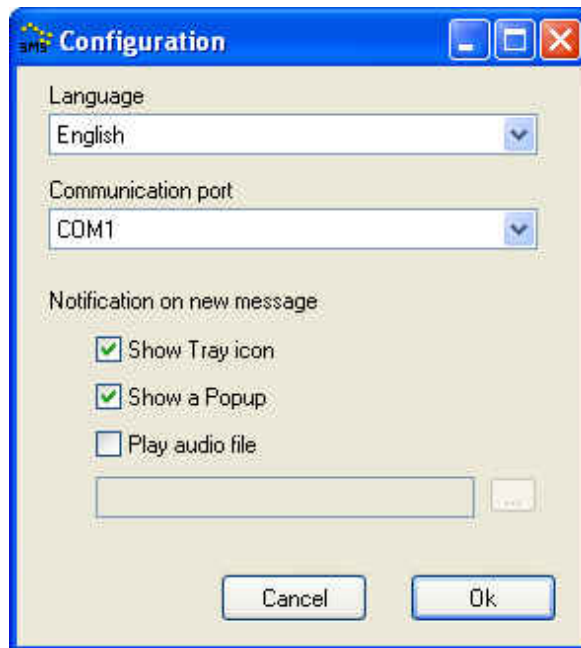


Figure 7